

Monday 12-8	Tuesday 12-6	Wednesday 10-6	Thursday 10-6	Friday Closed	Saturday 10-5	Sunday Closed
----------------	-----------------	-------------------	------------------	------------------	------------------	------------------



The Donald G. Mitchell Memorial Library was founded in 1910, adopted into the New Haven Free Public Library System in 1922, and opened in its current facility in 1966. Situated on the edge of Beecher Park, Mitchell Library has become a cornerstone of the Westville, Amity, Beaver Hills, Edgewood, and West Rock neighborhoods. Residents frequent the library to attend community meetings; borrow the latest bestsellers; enjoy, attend, or participate in a library program; or take advantage of the library's free Wi-Fi.

Branch Manager: Sharon Lovett-Graff

Square Footage: 14,027

Public Computer Stations: 20

Founded: 1910; Adopted into NHFPL, 1966

Renovation: 2002

Service Area Neighborhoods:

Westville, Amity, Beaver Hills, Edgewood, and West Rock

Community Partners:

Literacy Volunteers of Greater New Haven, Long Wharf Theatre, Westville Village Renaissance Alliance, Blockwatch 303, Westville/West Hills Community Management Team, Chapel Haven, Community Action Agency, New Haven Department of Parks, Recreation, and Trees, HomeHaven, ArtEcon Initiative, and more

School Cluster:

Brennan Rogers School of Communications and Media, Common Ground High School, Edgewood School, Elm City Montessori, Hopkins School, L.W. Beecher Museum School, Mauro-Sheridan School, Davis Street School, West Rock Author's Academy, Westville Community Nursery School, St. Aeden's St Brendan's School



Library Cardholders
5,185



Circulation
68,734



User Visits
69,464

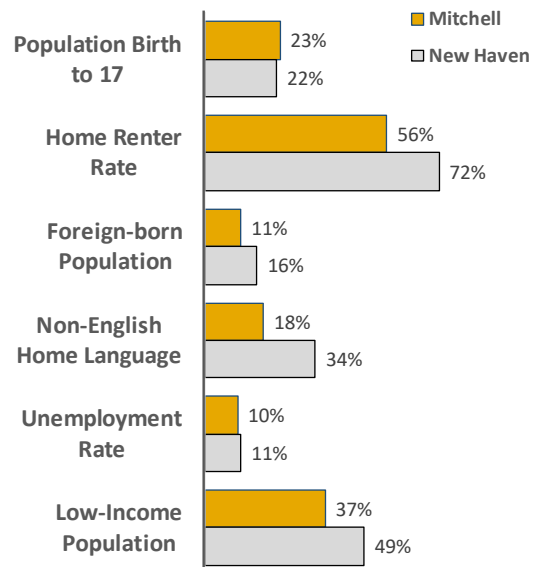
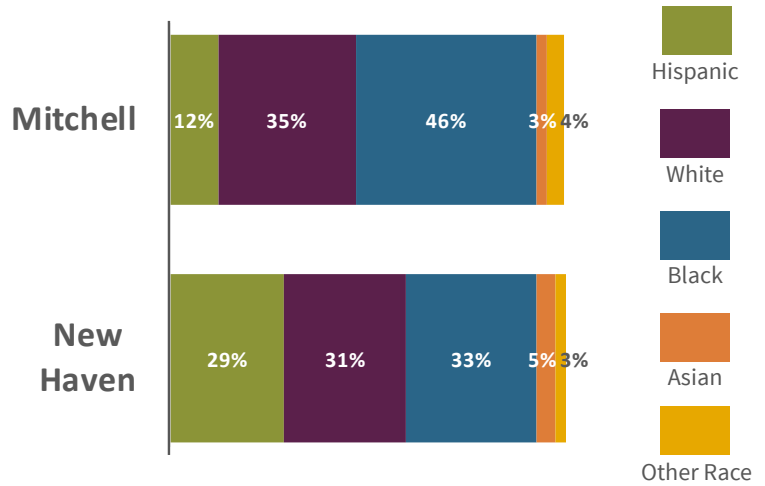


Computer Sessions
11,711



Youth Programs
232

Mitchell Library Service District: Demographics and Community Indicators

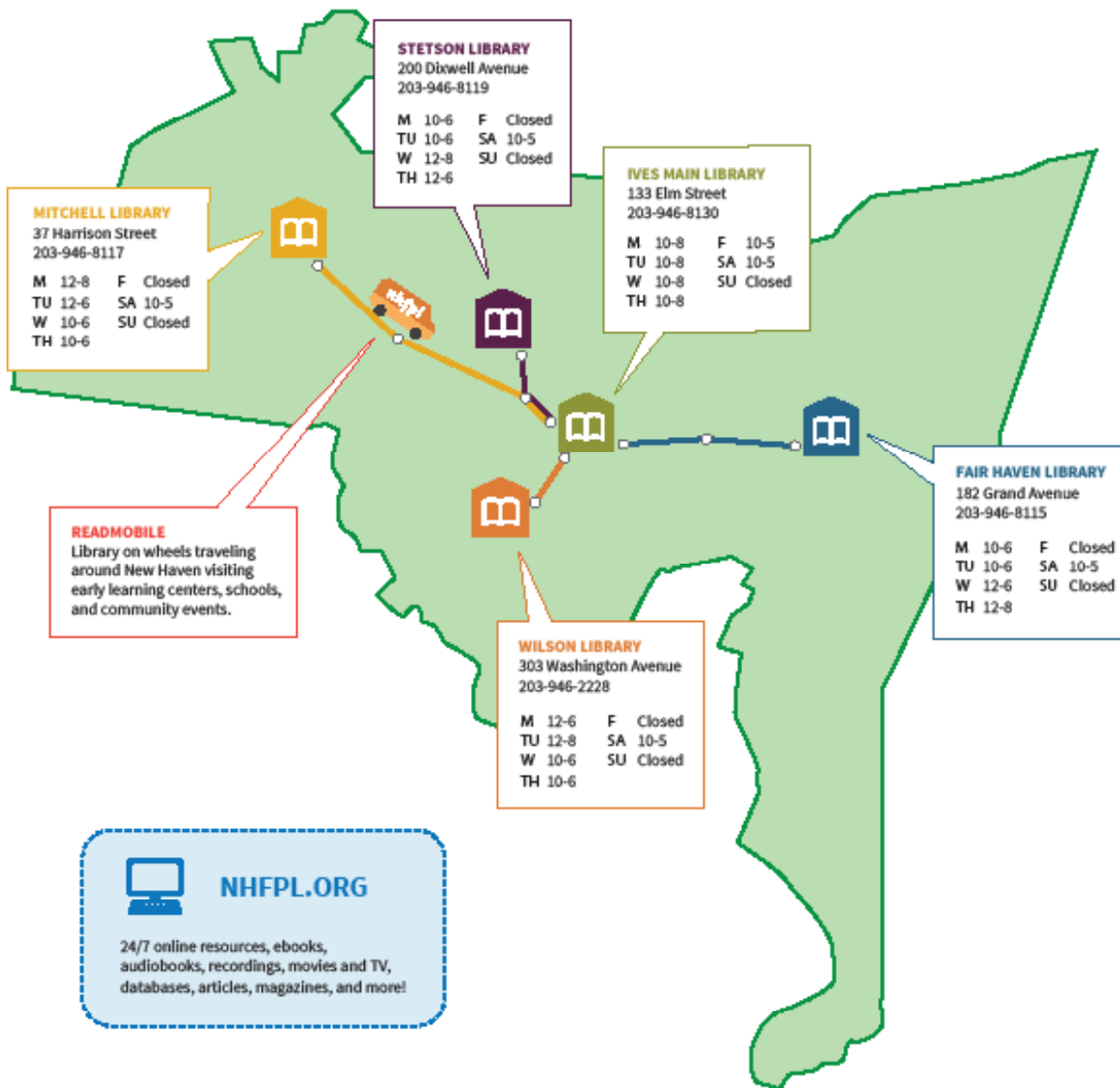


DataHaven. (2017). DataHaven 2016 New Haven Neighborhood Estimates, based on 2016 5Y American Community Survey and official City Plan Department boundaries. New Haven, CT: DataHaven

NEW HAVEN FREE PUBLIC LIBRARY AT A GLANCE

MISSION

The New Haven Free Public Library fosters lifelong learning, inspires curiosity, and builds community through shared access to resources, experiences, and opportunities for all.



Library Cardholders
35,807



Circulation
307,014



User Visits
542,531



Computer Sessions
108,417



Youth Programs
2,018

VISION

Now and tomorrow, the New Haven Free Public Library will transform lives and contribute to creating a strong, resilient, and informed community where everyone can thrive.

VALUES

1. Advance Literacy
2. Foster Learning and Achievement
3. Provide Access to Knowledge
4. Empower Economic Success
5. Inspire Exploration
6. Promote Connection and Collaboration
7. Deliver World-Class Service